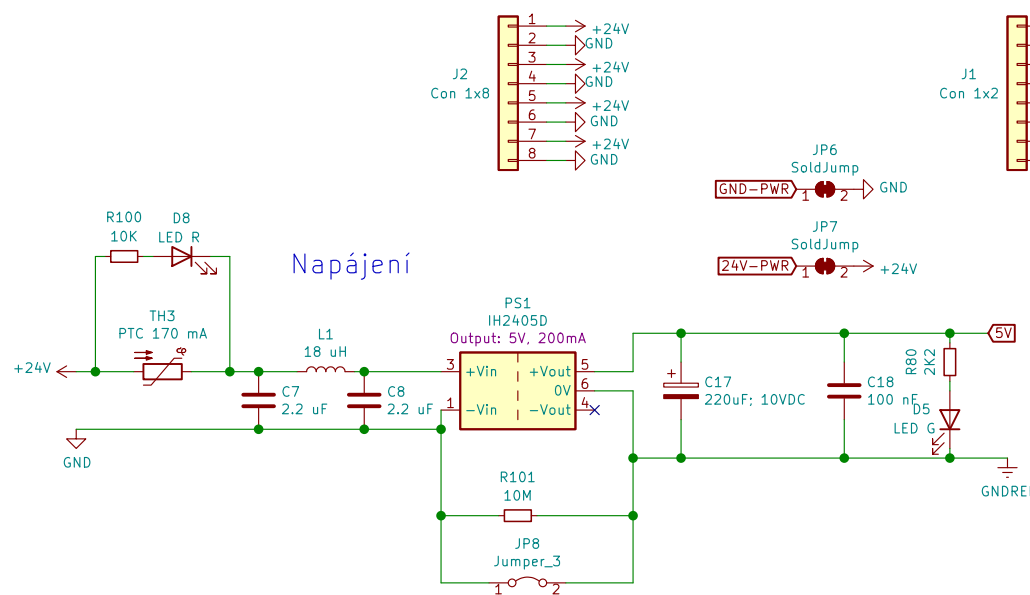
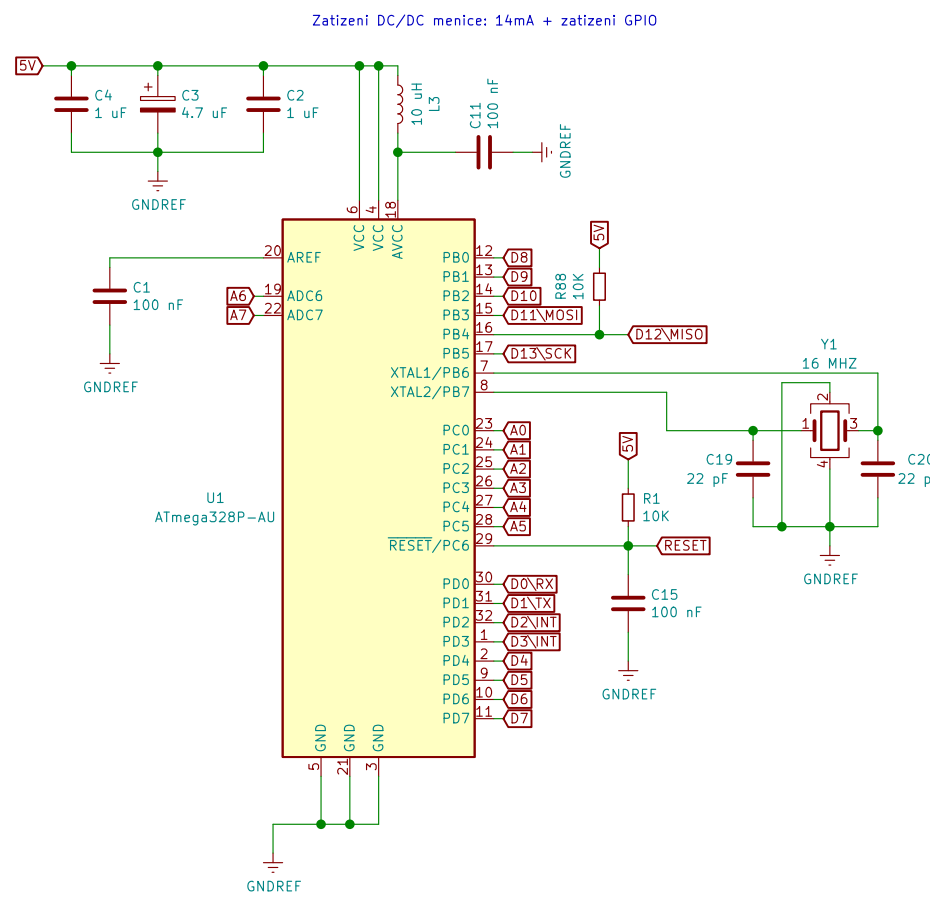


Napájení

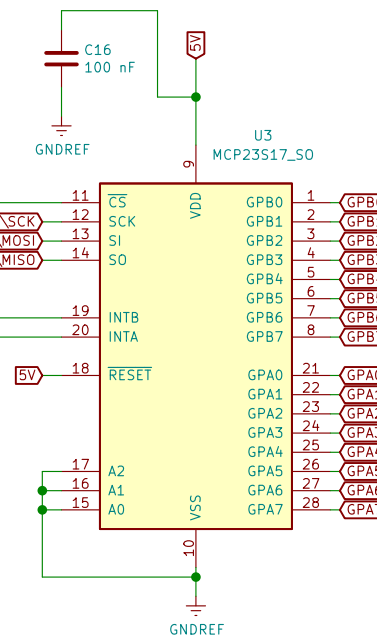


Mikrokontroler



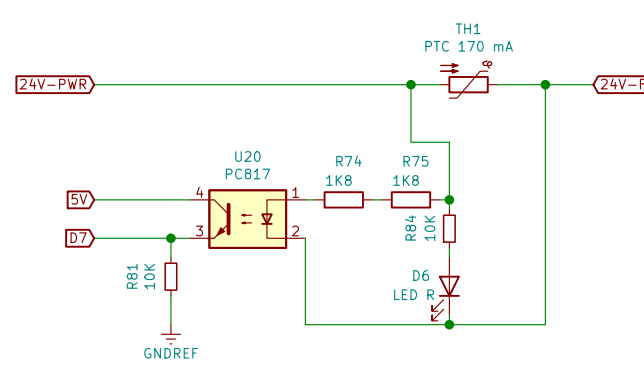
Rozsireni vstupu/vystupu

Zatizení DC/DC menice: 1mA + zatizení GPIO
Max. zatizení I GPIO: 25mA
Max. zatizení Vdd: 125mA



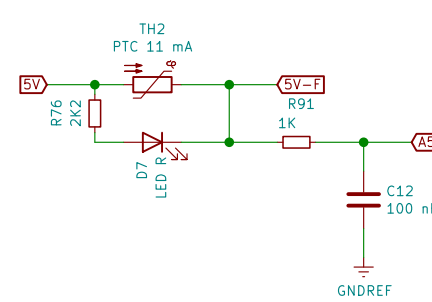
Diagnostika pretizeni vystupu

Zatizení DC/DC menice: 0.5mA

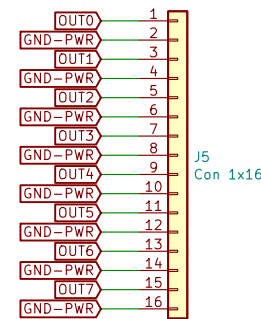


Diagnostika pretizeni napajeni vstupu pro potenciometri

Zatizení DC/DC menice: 11mA

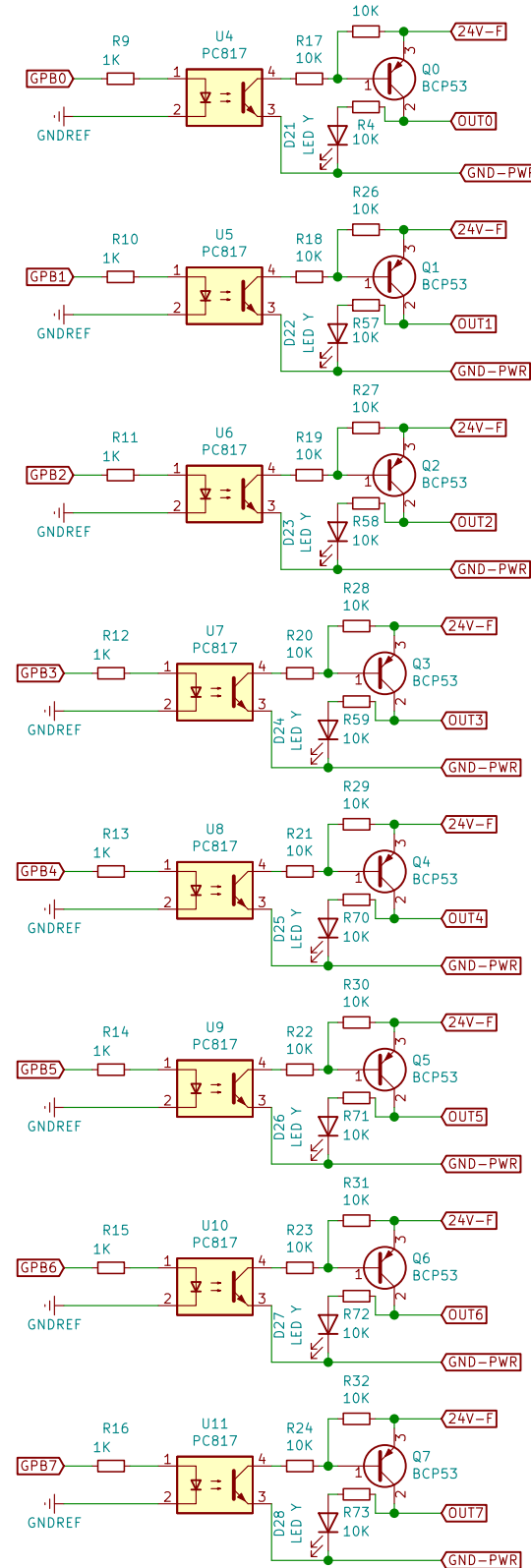


Vystupy 24V, 20mA, PNP



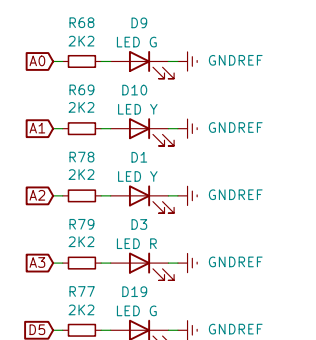
Tranzistory vystupu

Zatizení DC/DC menice: 8x0.5mA = 40mA



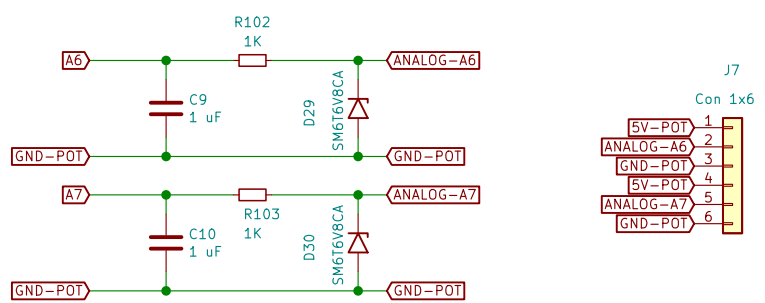
Stavové Led-ky

Zatizení DC/DC menice: 5x2mA = 10mA

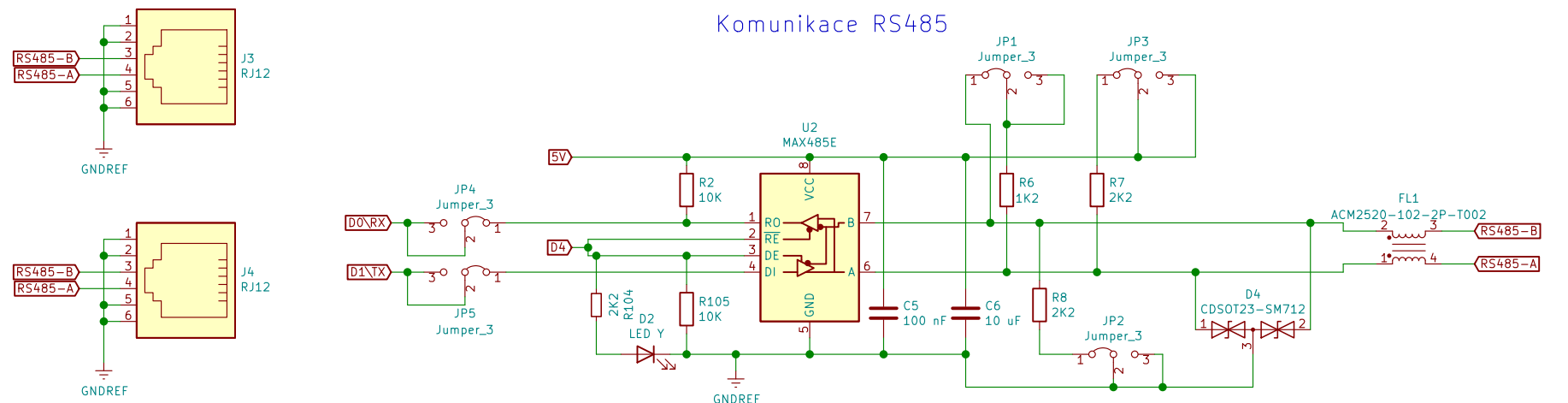


Vstupy pro potenciometri 10k Ohm

Zatizení DC/DC menice: 2x0.5mA = 1mA



Komunikace RS485



Open Hardware