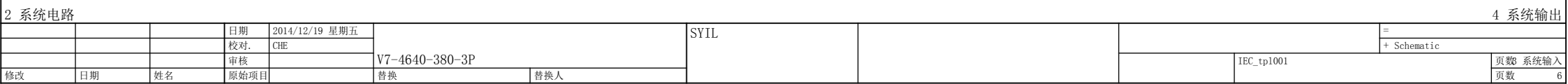


1 主线路										3 系统输入									
			日期	2014/12/19 星期五		SYIL								=		+ Schematic			
			校对.	CHE															
			审核																
				V7-4640-380-3P															
修改	日期	姓名	原始项目	替换		替换人						IEC_tp1001				页数 系统电路			
										页数 6									



部件列表

F01_001

设备标识符	数量	名称	类型号	供应商	部件编号
+Schematic-ADT4640	1	4640 parts	4640 system	ADTECH	ADT. 4640 system
+Schematic-FN1	0				
+Schematic-FN2	0				
+Schematic-FX8G1	1	relay module	FX-808D-8G	JT	JT. FX-808D-8G
+Schematic-FX8G2	1	relay module	FX-808D-8G	JT	JT. FX-808D-8G
+Schematic-H1	0				
+Schematic-H2	0				
+Schematic-IMS	1	VFD	IMS 3. 7KW	MODROL	MOD. IMS 3. 7KW
+Schematic-KA0	1	relay	JZX-22F (D) /4Z-24VAC	CHNT	CT. JZX-22F (D) /4Z-24VAC
+Schematic-KA1	1	Contactora	LC1D40A	Schneider	Sch. LC1D40A
+Schematic-KA2	1	Contactora	LC1D40A	Schneider	Sch. LC1D40A
+Schematic-KA3	1	Contactora	LC1D40A	Schneider	Sch. LC1D40A
+Schematic-KM0	1	Contactora	CJX2 3210	CHNT	CT. CJX2-3210
+Schematic-KM1	1	Contactora	CJX2 1210	CHNT	CT. CJX2-1210
+Schematic-KM2	1	Contactora	CJX2 1210	CHNT	CT. CJX2-1210
+Schematic-KM3	1	Contactora	CJX2 1210	CHNT	CT. CJX2-1210
+Schematic-LUBE	0				
+Schematic-M1	1	Servo motor	ACH-11120BI	ADTECH	ADT. ACH-11120BI
+Schematic-M2	1	Servo motor	ACH-11120BI	ADTECH	ADT. ACH-11120BI
+Schematic-M3	1	Servo motor	ACH-11120BI-G	ADTECH	ADT. ACH-11120BI-G
+Schematic-M4	1	Spindle motor	SM17-2. 2/3. 0-1500/10000-E-4V-B5	富士	SD. SM17-2. 2/3. 0-1500/10000-E-4V-B5
+Schematic-M5	0				
+Schematic-M6	0				
+Schematic-MPG	0				
+Schematic-Q1	1	Breaker	DZ47 C60 (3P)	CHNT	CT. DZ47 C60 (3P)
+Schematic-QF1	1	Breaker	DZ47 C20 (3P)	CHNT	CT. DZ47 C20 (3P)
+Schematic-QF2	1	Breaker	DZ47 C20 (3P)	CHNT	CT. DZ47 C20 (3P)
+Schematic-QF3	1	Breaker with overload	DZ108-20 (3P)	CHNT	CT. DZ108-20 (3P)
+Schematic-QF4	1	Breaker with overload	DZ108-20 (3P)	CHNT	CT. DZ108-20 (3P)
+Schematic-QF5	1	Breaker	DZ47 C6 (2P)	CHNT	CT. DZ47 C6 (2P)
+Schematic-QF6	1	Breaker	DZ47 C1 (1P)	CHNT	CT. DZ47 C1 (1P)
+Schematic-QF7	1	Breaker	DZ47 C3 (1P)	CHNT	CT. DZ47 C3 (1P)
+Schematic-QF8	1	Breaker	DZ47 C6 (1P)	CHNT	CT. DZ47 C6 (1P)
+Schematic-QS7/X	1	Servo driver	QS7	ADTECH	ADT. QS7
+Schematic-QS7/Y	1	Servo driver	QS7	ADTECH	ADT. QS7
+Schematic-QS7/Z	1	Servo driver	QS7	ADTECH	ADT. QS7
+Schematic-R1	0				
+Schematic-S1	0				
+Schematic-S2	0				
+Schematic-S3	0				
+Schematic-S4	0				
+Schematic-S5	0				
+Schematic-S6	0				
+Schematic-S7	0				
+Schematic-S8	0				
+Schematic-S9	0				
+Schematic-S10	0				
+Schematic-S11	0				
+Schematic-S12	0				
+Schematic-S13	0				
+Schematic-S14	0				
+Schematic-S15	0				
+Schematic-S16	0				
+Schematic-S17	0				
+Schematic-S18	0				
+Schematic-SB1	0				

+Schematic/4 系统输出1. a

			日期	2014/12/18 星期四	SYIL		部件列表：ADT.4640 system -				=	
			校对.	CHE							+ list	
			审核						V7-4640-380-3P			IEC_tp1001
修改	日期	姓名	原始项目		替换	替换人					页数	6

